



BREAKDOWN

Volume 26, Number 1 Jan 2011

The *MAR Breakdown* is the journal of the Mid Appalachian Region of the National Speleological Society. It is published three times a year; prior to the annual business meeting and prior to the Spring and Fall field meets.

Subscriptions-

A complimentary copy is sent to each grotto in the MAR. For individuals it works this way: When you attend a field meet \$3 of your registration fee goes directly to the MAR to pay for three issues of this newsletter and other MAR projects. You may also subscribe by sending \$4 to the treasurer. The number of issues you have remaining immediately follows your name on the mailing label.

Meetings and Meets-
The annual business meeting is held the last Saturday in February. Each spring and fall there is a field meet. Watch for dates.

Chair: **Bob Gulden**
1333 Chapelview Drive
Odenton, MD 21113-2129
(410)674-4474
caverbob@aol.com

Vice Chair: **Gary Dumire**
657 Valley View Rd.
Bellefonte, Pa. 16823
(814) 357-1134
mudtube@yahoo.com

Secretary: **Paul Winter**
paw5051@psu.edu

Treasurer: **Bette White**
4538 Miller Road
Petersburg, PA 16669
(814) 667-2709
wbw2@psu.edu

Editor: **Derek Flaig**
1360 58th Street
Altoona, PA 16601
(814) 946-4262
derekcaver2000@yahoo.com

Non copyrighted materials may be used by other speleo publications provided credit is given to the MAR Breakdown

**MAR BUSINESS MEETING
SET FOR
FEBRUARY 26, 2011
PCC MEETING TO FOLLOW**

The Mid Appalachian Region Business Meeting will be held at Mount Laurel Park, Harrisburg, PA on Feb 26, 2011 at 1:30 p.m.

You will find a map to the meeting on page 2.

A meeting of the Pennsylvania Cave Conservancy (PCC) will follow the MAR Business Meeting.



Inside Page

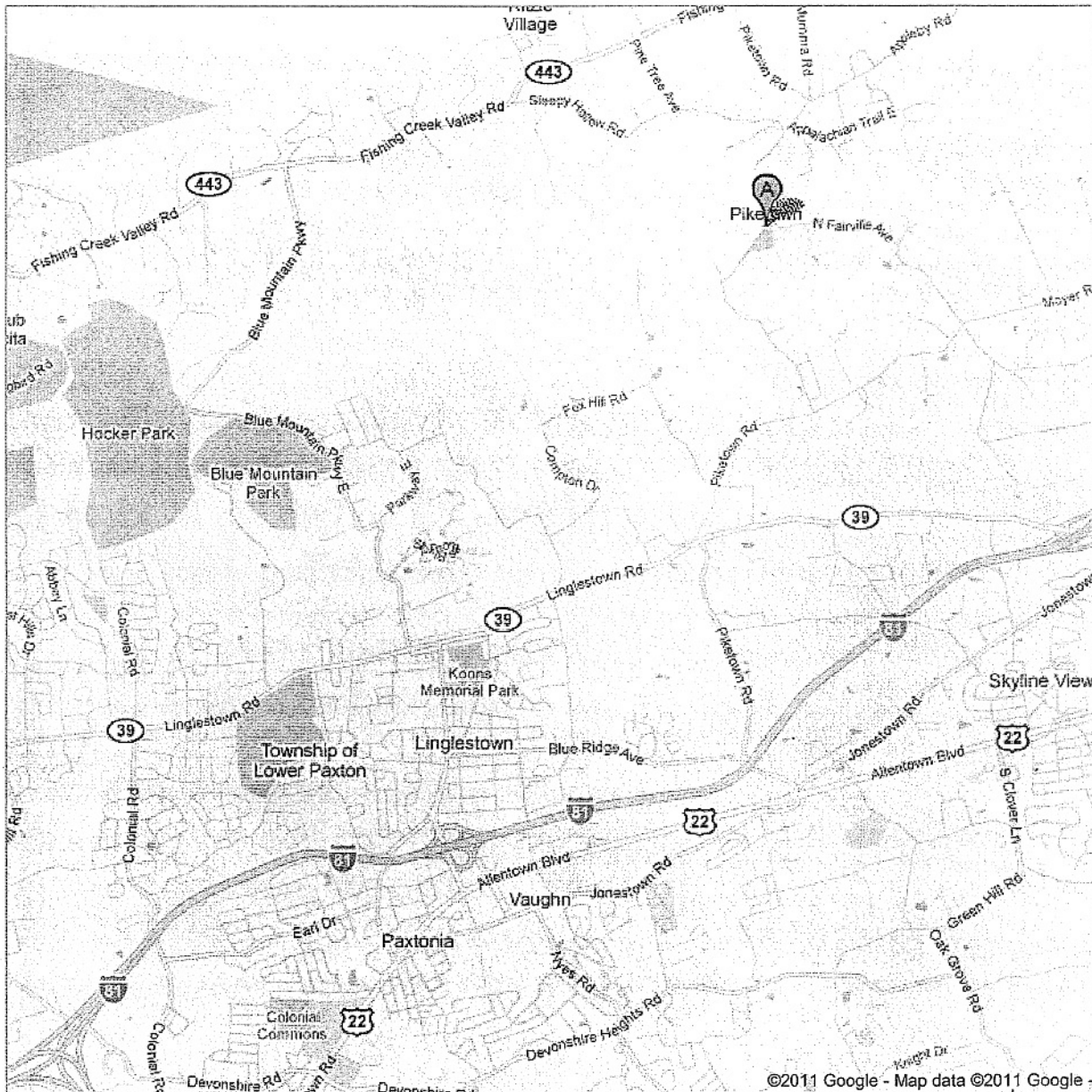
MAP TO 2011 BUSINESS MEETING SITE	2
DETAILS ON THE 2011 MEETING SITE	3
NSS 2013 CONVENTION LETTER	4
SPRING 2011 MAR MEET INFORMATION	5
MAR BULLETINS FOR SALE	BACK

Google maps

Address 1157 Piketown Rd
Harrisburg, PA 17112

Get Google Maps on your phone

Text the word "GMAPS" to 466453



©2011 Google - Map data ©2011 Google -

The Times Are a Changing

Mt Laurel Park

1157 Picketown Road, Harrisburg 17112

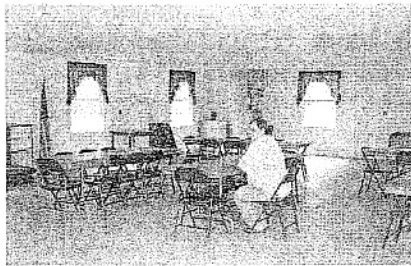
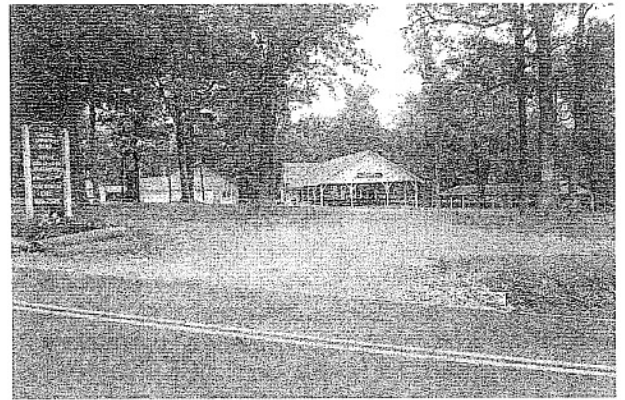
NEW SITE FOR THE MAR BUSINESS MEETING

February



Heated, clean, spacious meeting house
Heated bathrooms in adjacent building
Ample parking with snow removal

Kitchen on the premise
Kettle of chicken soup will be provided



- ❖ *Plan on bringing a side dish to share with others*
- ❖ *Sign up sheet for food items can be found on the MAR website*

<http://www.caves.org/region/mar/busnmtg.htm>

- ❖ *Bring your beverage of choice*

See attached sheet for map and directions



Shippensburg University PA Convention Aug. 5-9 2013

The folks who were bidding to host the 2013 NSS Convention had to drop out. The only date they could get at the selected facility were in direct conflict with the ICS.

I have been holding the Shippensburg U. site as a bailout location for years. Unfortunately, many of the folks I was counting on to fill out the staff are working on the 2012 Convention. To ask them to do a job 2 years in a row is asking too much.

Four grottoes in the MAR have already volunteered to host pre & post field camps and/or to lead trips during Convention.

A few folks have indicated their willingness to fill the staff positions, but we are far from having a full roster. I am collecting names and the positions they have volunteered to fill. Some folks have offered fill the top positions, but those who will be reporting to the Chairs need to decide if they are the leaders they feel comfortable will be the best choice for the committee. Leaders & staff must be compatible for this to work.

There is a Convention Manual in the Business Pages of the NSS web site. Please read the position descriptions to see if there is a position you can fill or be a part of.

We need to get the bid together by March 1 to send to the NSS BOG to review before the April 1 meeting. This gives them time to review the bid. They will not vote on the bid until the BOG meeting at the 2011 Convention. That only leaves 2 years to get it all together and ready to run. That may seem like a long time, but it goes by fast.

The site will allow everything to happen in one location. We can camp, rent dorm rooms, use the dining facilities, have all the sessions, salons, workshops, etc. within a 10 minute walk end to end. That does not mean that we might not want to go off site for the Howdy Party, if there is a great option, but we don't have to.

The facility has almost everything we will need. They have a health center (med. tent), the rooms are equipped with power point projectors, they have all the tables & chairs we will need. There are a few things we will need to work on. The gym (vertical) is not AC, so we will have to find a way to AC that location. Same applies for the Banquet.

We will need to supplement the flushers at the campground with port-a-johns. We also might want to get a big tent to set up as a social area in or near the campground. We cannot park next to our tents, but the parking area borders the camping area. Tin tenters will have to park in the lot, but we can reserve space for them. Sorry, no hookups are available. There is water at one end of the campground. We may have to run some water down to the middle & far end.

Officially this is a dry campus, but worst case we will have to have cans instead of kegs. If anyone knows of a good winery in PA, it looks like we will be able to have wine at the banquet.

I think you can see that a lot of the issues we will have to deal with, can be cut down into small units that a few people can handle. Because there is so much available on site, we do not have to create a lot of big wheels that will burn out people.

We even have a local caver who has a T-shirt business & has offered his services.

Give it some thought & if you see a job with your name on it, please send me a note & I will add you to the roster.

Thanks

Carol ctider@ymail.com

FCG a Chapter of the



M.A.R. Events

[Home Page](#)

[General Info](#)

[WNS](#)

[Meetings](#)

[Membership](#)

[Contact](#)

[Newsletters](#)

[Speleo-Calendar](#)

[Trips](#)

[Carnegie Cave](#)

[Cleversburg Sink](#)

[Links](#)



50th Anniversary
1953 - 2003

2011 Annual Business Meeting - February 26, (Click on MAR logo for more info.)

2011 Field Meets

Spring:

May 13 -15. HOSTED BY F.C.G., in SHADE GAP, PA. (Huntingdon County).

Harper's Memorial Park (entrance at Firehouse in Shade Gap)

Route 641, 11880 Neelyton Road

Shade Gap, PA 17255

Hot meal will be provided for Saturday supper - Tickets must be purchased.

We have a band for Saturday night.

Showers, bathrooms, and water on grounds.

Lots of room for camping.

More information coming soon.

Fall:

2012 Annual Business Meeting - February 26, (More Information & Directions)

2012 Field Meets

MAR Breakdown
 1360 58th Street
 Altoona, PA 16601

Mid-Appalachian Region Bulletins (including reprinted Bulletins)

NSS Member Price List
 Effective January 2010

1-4	<i>Reprint</i> Volume Bulletins 1-4			7.00 + postage B
5	<i>Reprint</i> Volume Caves of Western PA 29 caves 19 maps	76pp		8.00 + postage A
	Armstrong, Clarion, Fayette, Lawrence, Mercer, Somerset, Venango, Westmoreland counties			
6	<i>Reprint</i> Vol. Caves of Southern Cumberland Valley 93 caves 69 maps	126pp		17.00 + postage B
	Cumberland, Dauphin, Franklin counties			
7	<i>Reprint</i> Volume Caves of Fulton County	4 caves 4 maps	17pp	5.00 + postage A
8	<i>Reprint</i> Volume Caves of Blair County	89 caves 40 maps	90pp	7.00 + postage B
9	<i>Reprint</i> Vol. Caves of Huntingdon County	94 caves 36 maps		10.00 + postage B
10	Caves of Snyder County	20 caves 14 maps		5.00 + postage A
11	Caves of Centre County	71 caves 56 maps		10.00 + postage B
12	Caves of Mifflin County	47 caves 31 maps	5 large	10.00 + postage B
13	Caves of Perry County	13 caves 6 maps		5.00 + postage A
14	<i>Reprint</i> Vol. Caves of Bucks County	24 caves 6 maps	43pp	5.00 + postage A
15	<i>Reprint</i> Vol. Caves of Lehigh County	25 caves 13 maps	35pp	6.00 + postage A
16	Caves of Northampton County	24 caves 13 maps	1 large	6.00 + postage A
17	Caves of Northumberland County	20 caves 10 maps		5.00 + postage A
18	Caves of Berks County	64 caves 32 maps		10.00 + postage B
19	Caves of Bedford County	54 caves 33 maps		7.00 + postage A
20	Caves of Westmoreland County	337 caves 187 maps	10 large	29.50 + postage C

US postage	A	\$1.80 first copy, 50 cents each additional to the same address
	B	\$2.00 first copy, 50 cents each additional to the same address
	C	\$3.00 each copy

MAR Bulletin Orders: Please make checks payable to MAR. All checks must be payable in US dollars on US Bank of US Money Order;

Order from: Bette White, 4538 Miller Road, Petersburg, PA 16669-2711